

#### QUICK SELECTION / Selezione veloce

input speed ( $n_1$ ) = 1400 min<sup>-1</sup>

Output Speed $n_2$ [min <sup>-1</sup> ]	Ratio $i$	Motor power $P_{1M}$ [kW]	Output torque $M_{2M}$ [Nm]	Service factor f.s.	Nominal power $P_{1R}$ [kW]	Nominal torque $M_{2R}$ [Nm]	Available B5 motor flanges			Available B14 motor flanges		Dynamic efficiency <b>RD</b>	Tooth Module  [mm]	Ratios code 
							A	B	C	P	Q			
							56	63	71	63	71			
47	<b>30.1</b>	0.37	58	1.3	<b>0.49</b>	77				<b>C</b>		76	2.5	01
33	<b>43.0</b>	0.25	55	1.4	<b>0.35</b>	77				<b>C</b>		75	2.4	02
23	<b>60.2</b>	0.25	71	1.1	<b>0.27</b>	77				<b>C</b>		69	2.6	03
18.1	<b>77.4</b>	0.25	81	1.1	<b>0.27</b>	88				<b>C</b>		61	2.0	04
12.5	<b>112</b>	0.18	84	1.1	<b>0.19</b>	88				<b>C</b>		61	2.7	05
9.0	<b>155</b>	0.12	71	1.2	<b>0.15</b>	88				<b>C</b>		56	2.1	06
7.6	<b>185</b>	0.12	74	1.0	<b>0.12</b>	77				<b>C</b>		49	1.8	07
5.4	<b>258</b>	0.12*	77	<0.8	<b>0.09</b>	77				<b>C</b>		47	1.3	08
4.8	<b>292</b>	0.12*	66	<0.8	<b>0.08</b>	66				<b>C</b>		44	1.2	09
4.1	<b>344</b>	0.12*	44	<0.8	<b>0.05</b>	44				<b>C</b>		40	1.0	10
3.3	<b>430</b>	0.12*	44	<0.8	<b>0.04</b>	44				<b>C</b>		36	0.8	11

**A** Motor Flanges Available  
Flange Motore Disponibili

**B** Supplied with Reduction Bushing  
Fornito con Bussola di Riduzione

**B** Available on Request without reduction bushing  
Disponibile a Richiesta senza Bussola di Riduzione

**C** Motor Flange Holes Position  
Posizione Fori Flangia Motore

\* Power higher than the maximum one which can be supported by the gearbox. Select according to the torque  $M_{2R}$   
Potenza superiore a quella massima sopportabile dal riduttore. Selezionare in base al momento torcente  $M_{2R}$

**EN** Unit **PS5** is supplied with synthetic oil, providing "long life" lubrication. For mounting position V5-V6 please contact us. See table 1 for lubrication and recommended quantity. In table 2 please see possible radial loads and axial loads on the gearbox.

**I** Il riduttore tipo **PS5** viene fornito lubrificato a vita con olio sintetico. Per posizioni V5-V6 contattare il ns. servizio tecnico. Vedi tab.1 per oli e quantità consigliati. In tab.2 sono presenti i carichi radiali e assiali applicabili al riduttore.

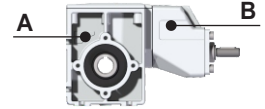
**D** Für die Lebensdauerschmierung ist das Getriebe der Größe **PS5** mit synthetischem Öl befüllt. Bei Einbaulage V5 oder V6 bitten wir um Rücksprache. In Tabelle 1 ist die Schmiermenge und das empfohlene Schmiermittel angegeben. In Tabelle 2 sind die zulässigen Radial- und Axialbelastungen des Getriebes aufgeführt.

**F** Le réducteur de type **PS5** est fourni lubrifié à vie avec de l'huile synthétique. Concernant les positions V5.V6, contactez notre service d'assistance technique. Voir tableau 1 concernant les huiles et les quantités conseillées. Les charges radiales et axiales applicables au réducteur sont précisées dans le tableau 2.

**E** El reductor tamaño **PS5** se suministra, lubricado de por vida con aceite sintético. Para las posiciones V5 y V6 contactar con nuestro servicio técnico. Ver tabla 1, para cantidades y aceites recomendados. En la tabla 2, se encuentran las cargas radiales y axiales admitidas por el reductor.

#### LUBRICATION PS5 Oil

Common lubrication 0.32 l (A + B) except V5 mounting position which is 0.52 l (A + B).



**AGIP** Telium VSF 320

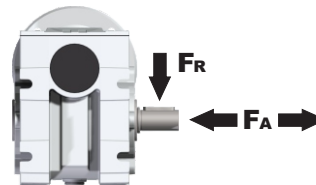
**SHELL** Omala S4 WE 320

For all details on lubrication and plugs check our website **tab. 1**  
Per maggiori dettagli su lubrificazione e tappi olio vedi il nostro sito web

#### RADIAL AND AXIAL LOADS

##### Output shaft

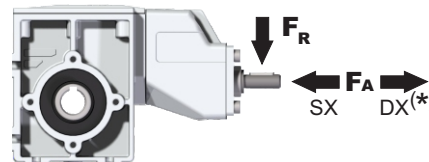
Albero di uscita



$n_2$ [min <sup>-1</sup> ]	FA [N]	FR [N]
200	1350	2250
150	1500	2500
100	1650	2750
75	1650	2750
50	1700	2900
25	1700	2900
15	1700	3000

##### Input shaft

albero in entrata



$n_1$ [min <sup>-1</sup> ]	FA [N]	FR [N]
1400	44	220

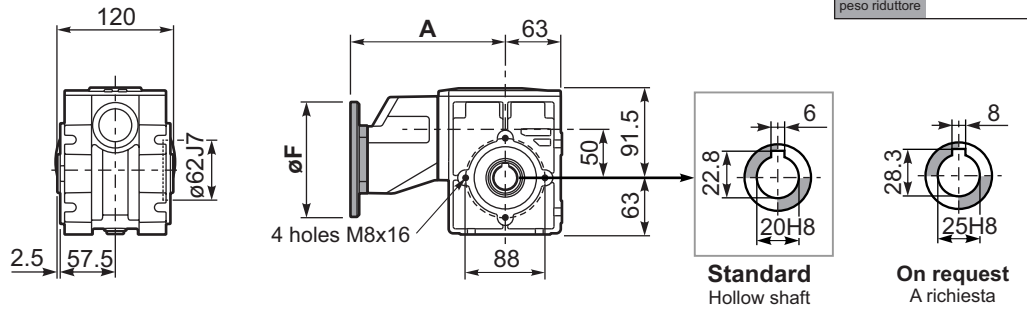
\*Strong axial loads in the DX direction are not allowed.  
Non sono consentiti forti carichi assiali con direzione DX

**tab. 2**

**PPS5FB...** Basic wormbox  
Riduttore base

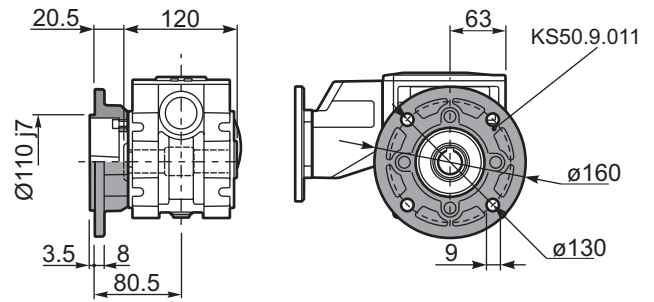
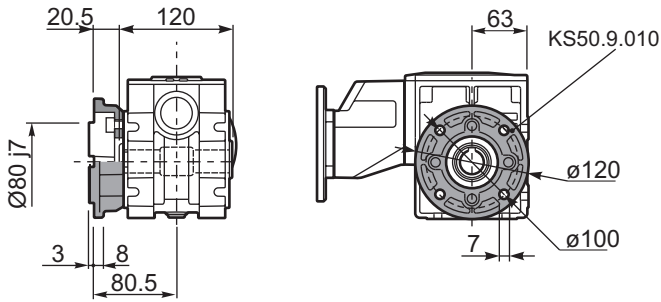
Gearbox weight  
peso riduttore **5.40 Lt.**

M. flanges	Kit code	øF	A
<b>56B5</b>	K050.4.046	120	146
<b>63B5</b>	K050.4.041	138	148
<b>71B5</b>	K050.4.042	160	145.5
<b>63B14</b>	K050.4.047	90	148
<b>71B14</b>	K050.4.045	105	145.5



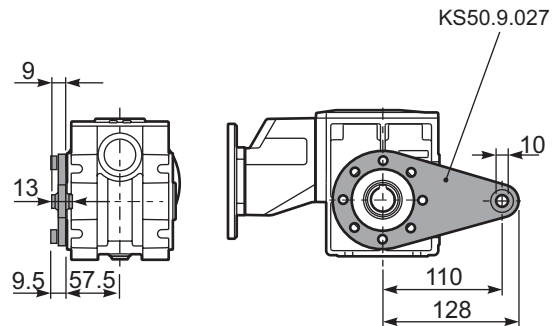
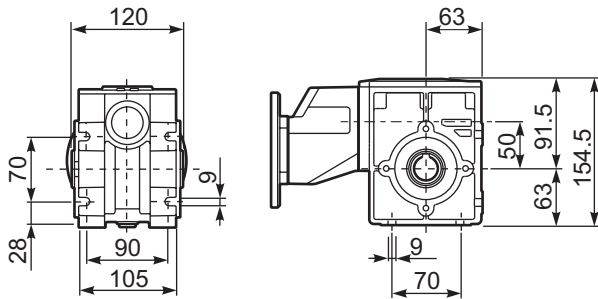
**PPS5FM...C** Output flange  
Flangia in uscita

**PPS5FN...C** Output flange  
Flangia in uscita



**PPS5FB...** Feet  
Piedini

**PPS5BR...** Reaction arm  
Braccio di reazione

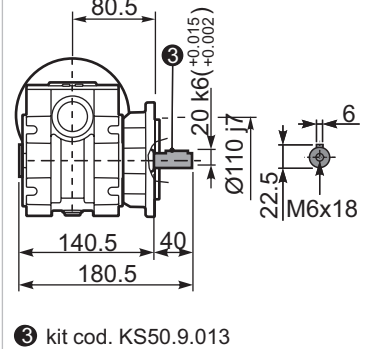
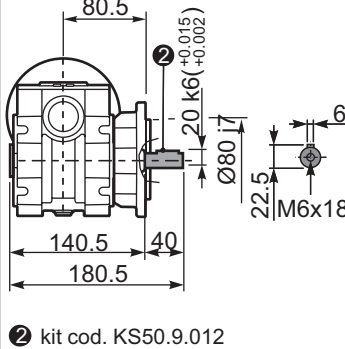
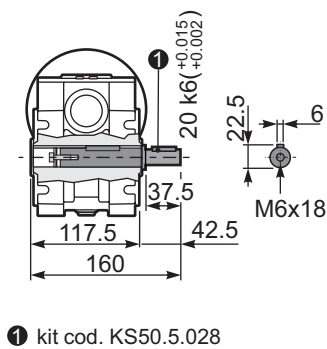
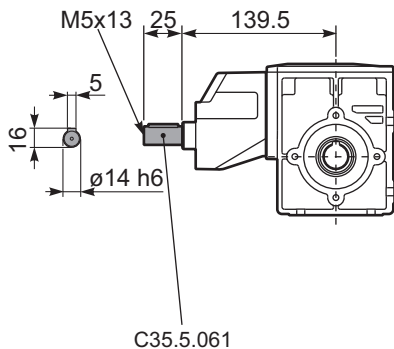


**RPS5FB...** Input shaft  
Albero in entrata

**PPS5...S...** Single Shaft  
Albero lento semplice

**PPS5FM..R** Special Shaft  
Albero lento

**PPS5FN..R** Special Shaft  
Albero lento



The flange dimensions are the same as FM(KS50.9.010)

The flange dimensions are the same as FN(KS50.9.011)